

ORTimer: A Visual Management Tool for TOT Improvement

Robert Allen, PhD

Embedded Scholar Perioperative Services

ORTimer

Turnover Time Bi-weekly Report: D-Core Total Data Points: 339 Date: 4/26/16 - 8/15/16

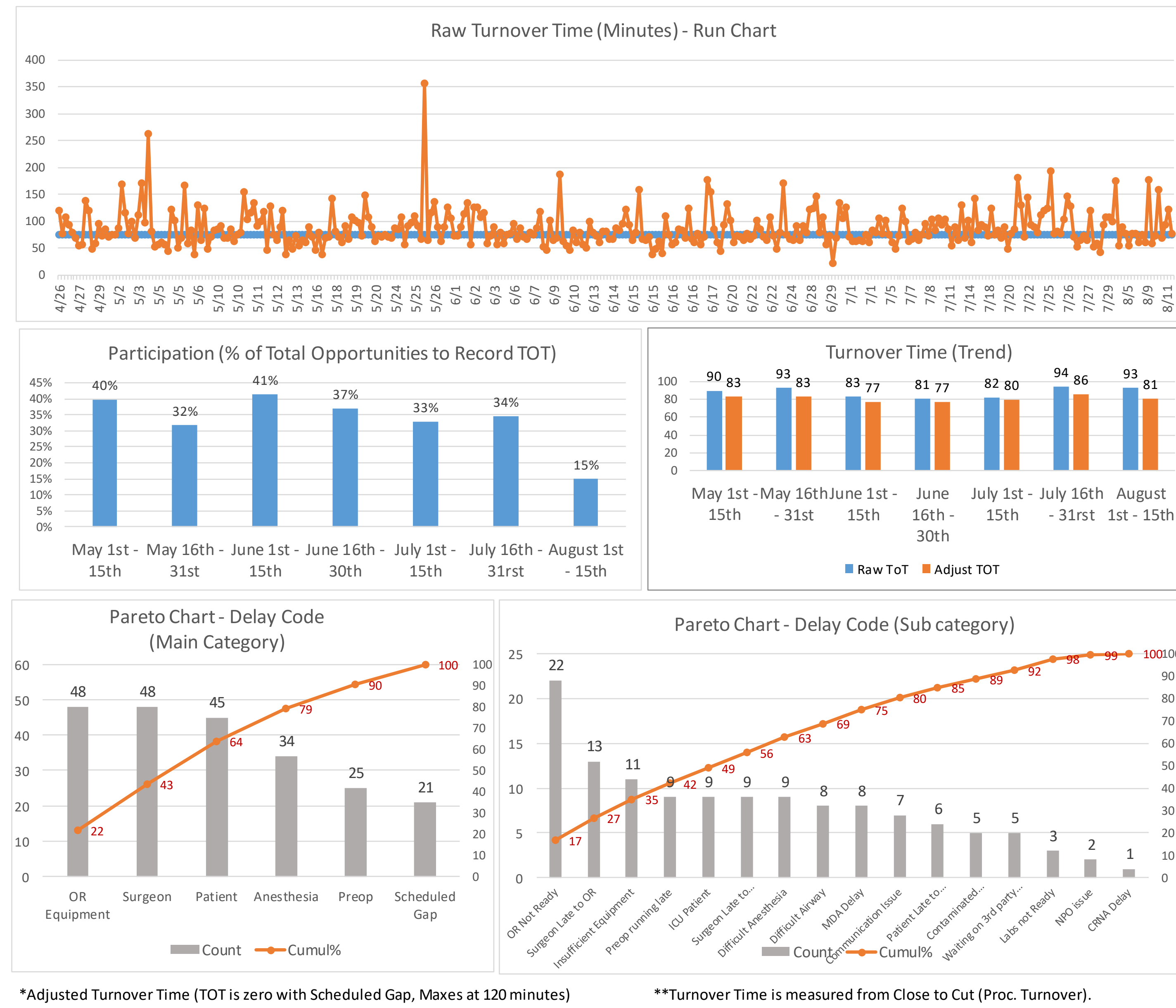


Figure 1: Metrics Dashboard from ORTimer Application Data

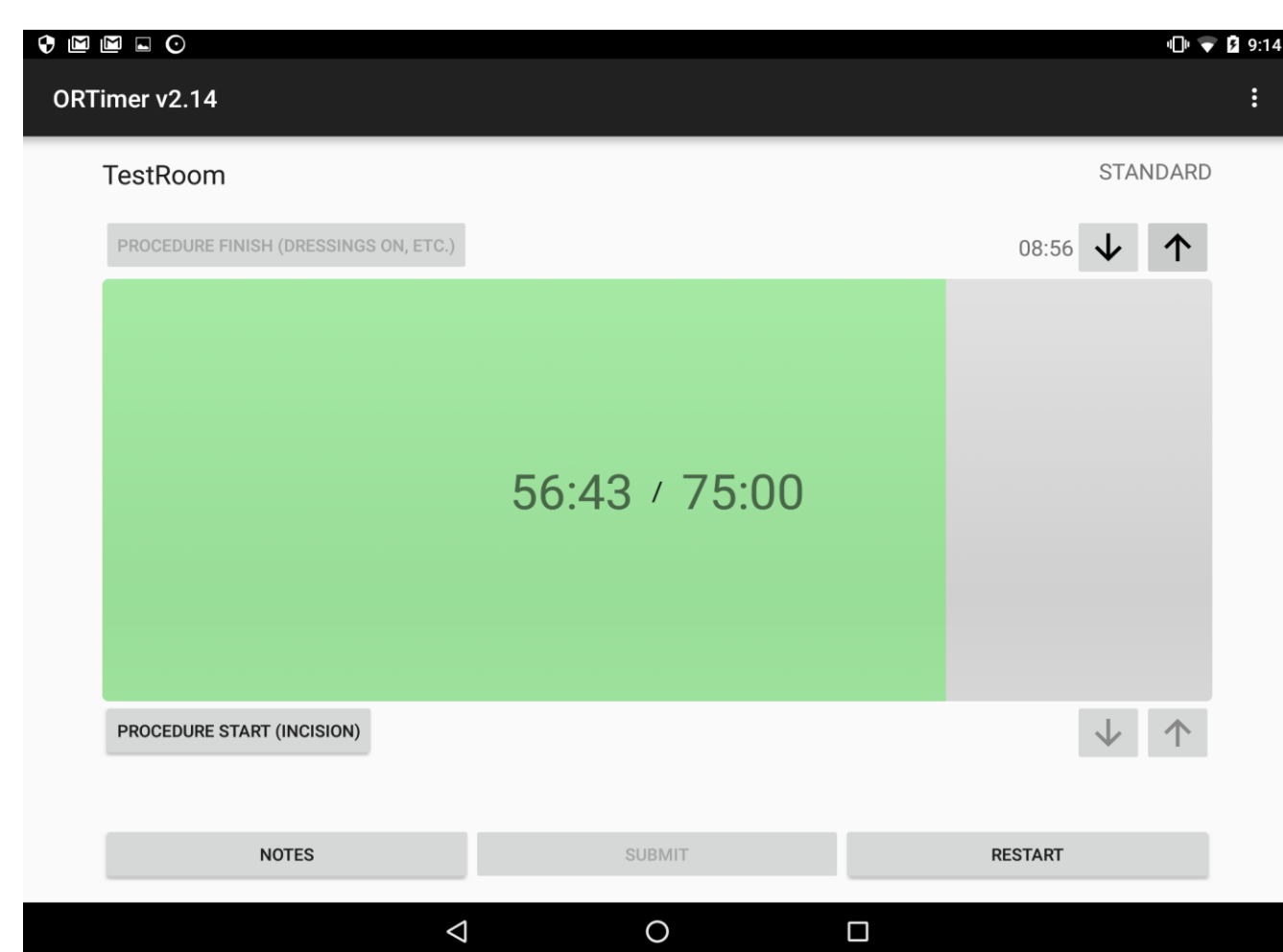


Figure 2: ORTimer Application Main Screen. Screen used for visual management of room turnover time.

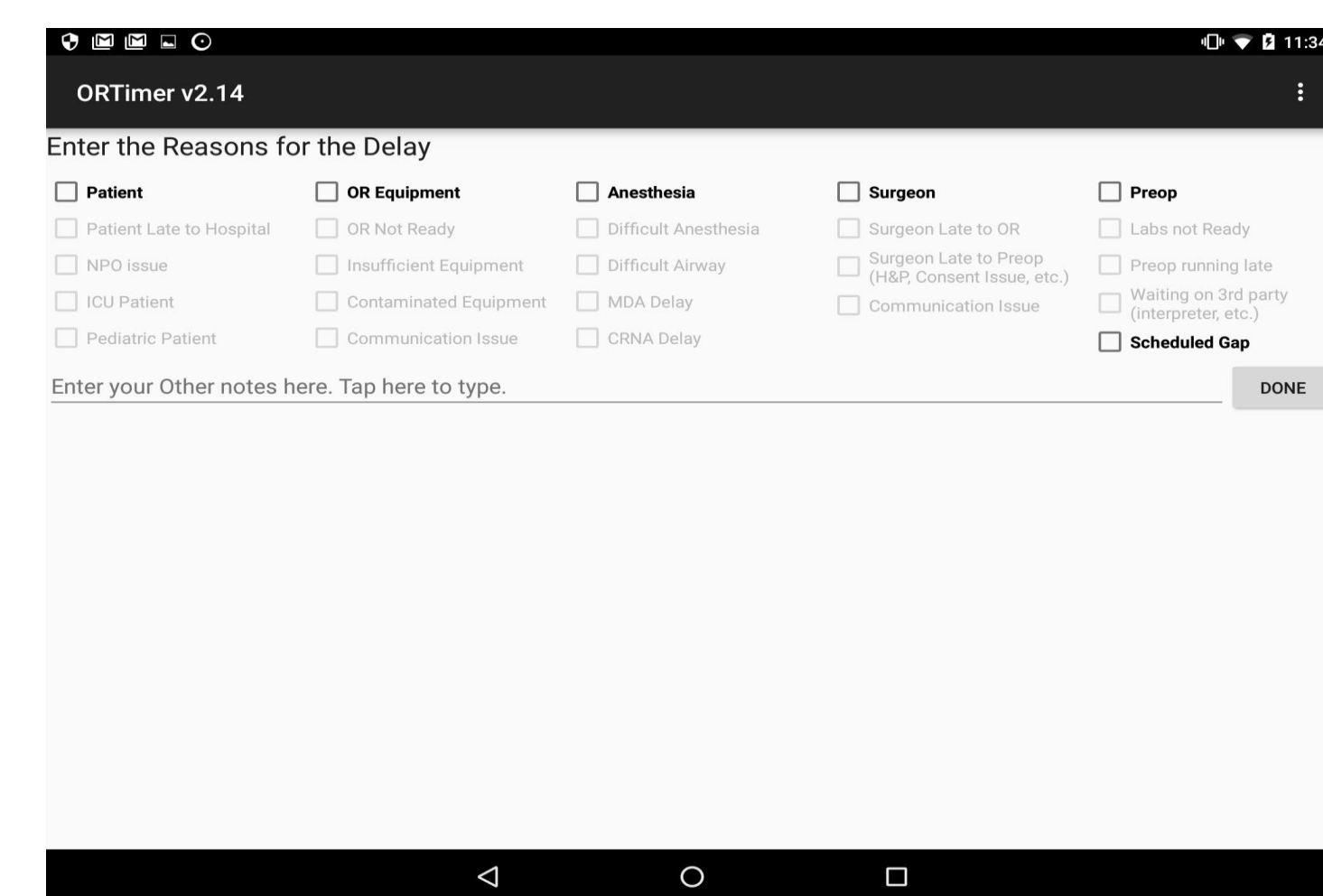


Figure 3: ORTimer Application Delay Screen. Screen used for recording of delay reasons for turnover times exceeding limit set by managers.

Methods

Presented to the operating room on an android tablet, the "OR Timer App" allows the user to set reasonable goals for turnover time and measure the ability of the operating room staff in meeting those goals. The "OR Timer App" was implemented in both the GMH OR D-Core and the MMOB GI Lab where before and after data was collected to show the effects of using the timer app.

Results

Expected and trial results would indicate that there is an increased efficiency of the operating room as well as increased participation in use of the application.

Keys to Success

Overall:

- Get Buy-in at all levels
- Nurse Education (WHY)
- Stay Focused
- Simple and Obtainable Goals
- Ability to categorize and easily report findings

Implementation (Adoption):

- Visibility
- Ease of Use
- Listen to Feedback
- Minimize duplicate documentation
- Improvement Focus on Processes (Not People)

GI Timer

Turnover Time Bi-weekly Report: MMOB GI Total Data Points: 322 Date: 11/28/16 - 12/13/16

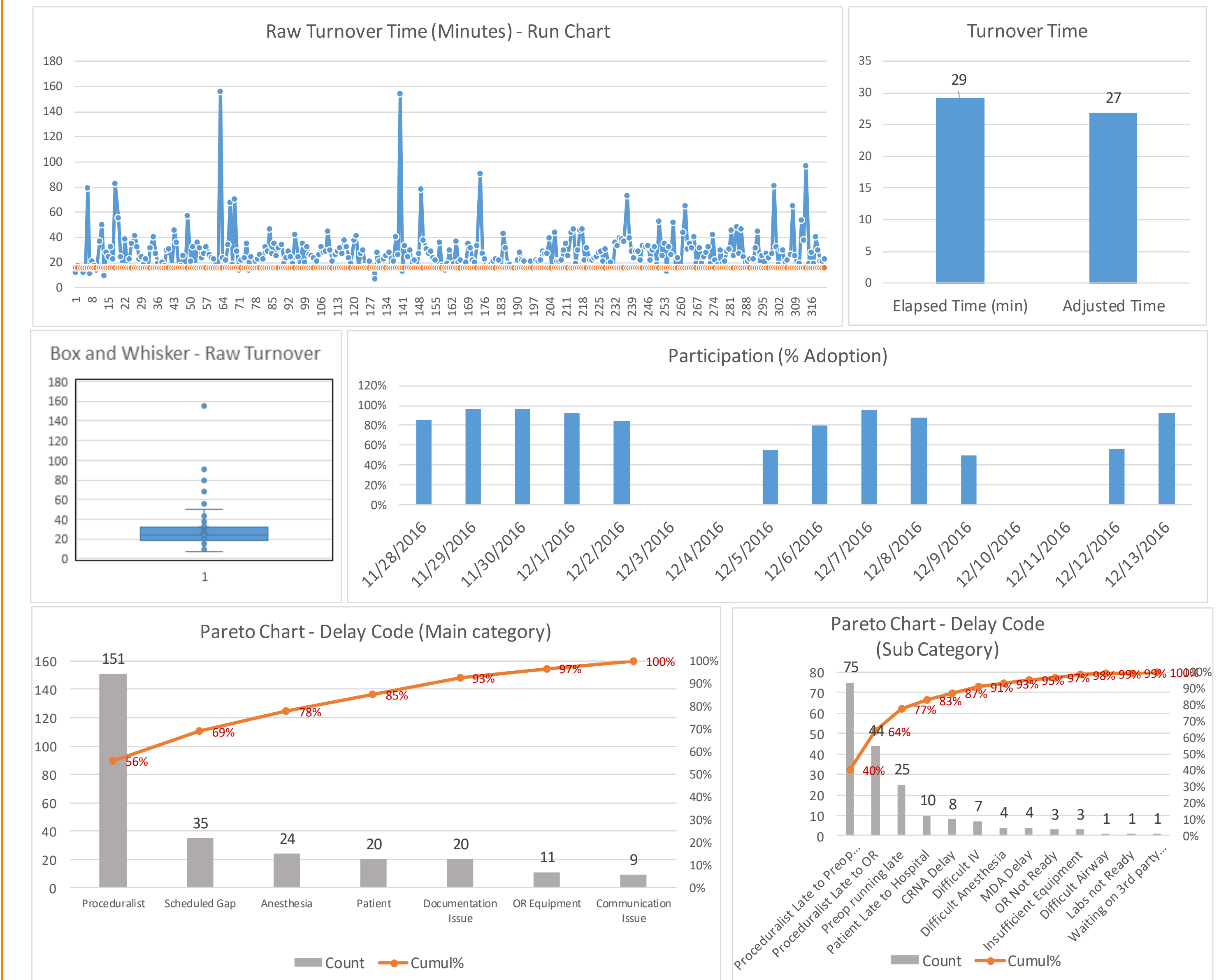


Figure 1: Metrics Dashboard from GI Timer Application Data

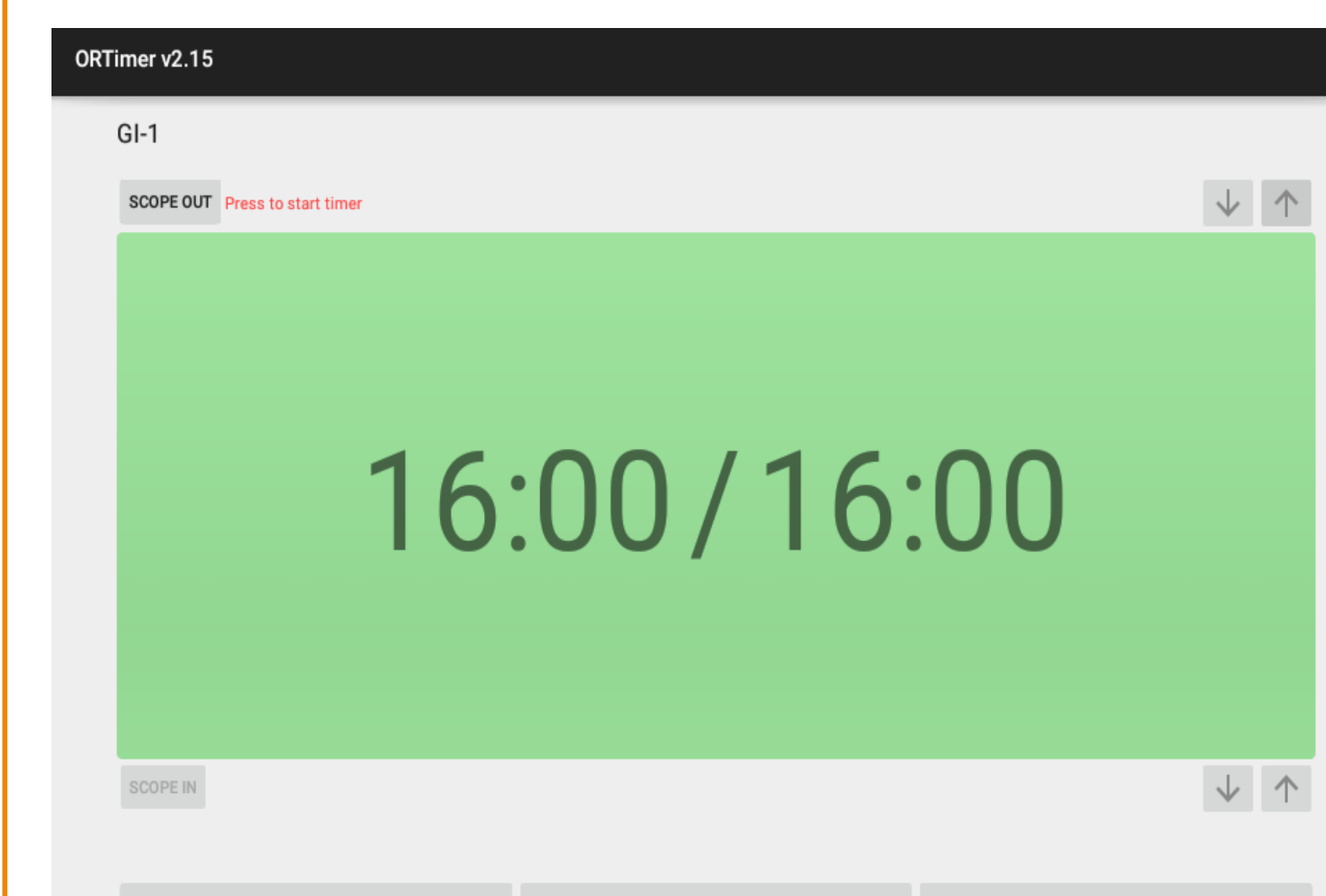


Figure 2: ORTimer Application Main Screen. Screen used for visual management of room turnover time.

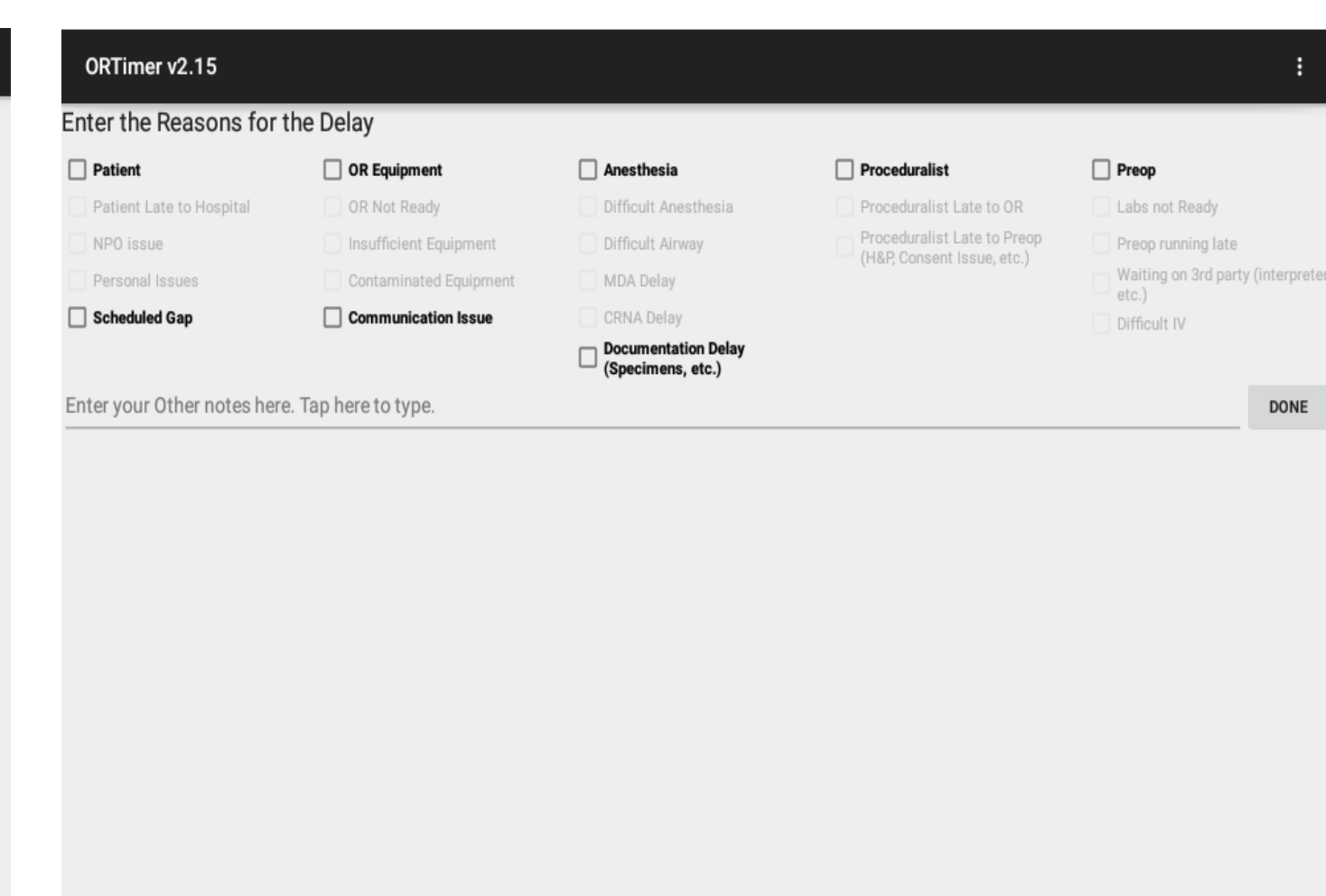


Figure 3: ORTimer Application Delay Screen. Screen used for recording of delay reasons for turnover times exceeding limit set by managers.



Robert Allen, PhD, Embedded Scholar and Research Assistant Professor
 Kevin Taaffe, PhD, Associate Professor of Industrial Engineering
 Lawrence Fredendall, PhD, Professor of Management
 Joel Greenstein, PhD, Associate Professor of Industrial Engineering



Brad Hoover, MSNA, CRNA
 Rebecca Greer, CRNA Manager
 Tim Brookshire, Senior Administrator of Perioperative Services
 Gary Abrams, MD Gastroenterology
 Amanda Rinehart – MMOB GI Nurse Manager



Nathan Huynh, PhD, Associate Professor of Civil and Environmental Engineering
 Jose Vidal, PhD, Professor of Computer Science and Engineering